

**ShinewayTech**® MTP-200 series are the compact multi-functional platform, which are specially designed for FTTx/WAN applications and can meet all test requirements of installers, contractors and service operators during network installation, construction, maintenance and troubleshooting. It is convenient and accurate for auto/manual testing, multi-wavelength testing and multifunctional analysis.



**ShinewayTech**®

Hand-held High Performance OTDR

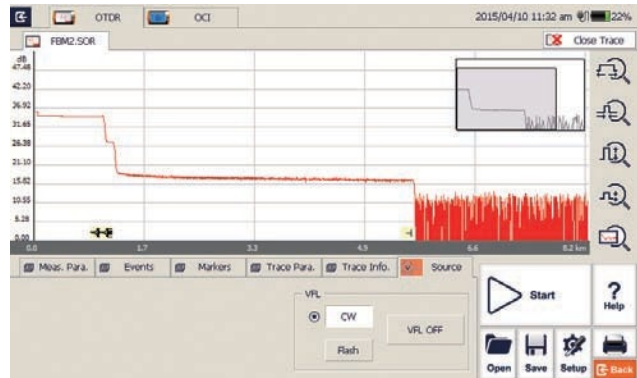
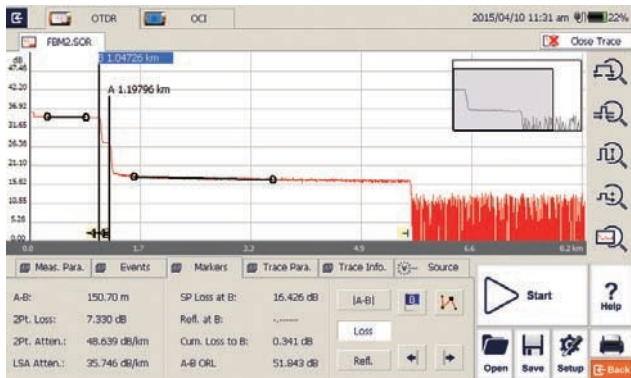
**MTP-200**  
Series

## Multi-Function and High Performance OTDR Testing

- Dynamic Range up to 50dB
- Shortzone: EDZ 0.8m, ADZ 4.5m
- Auto/Manual test and analysis
- Multi-wavelength testing
- Visible laser source function
- In-Line test and through Splitter test (1625/1650nm with filter)
- OTDR Module up to four wavelengths, SM/MM Option
- Fault locating, fiber length/loss/return loss measurement, connector/splice/splitter/macrobend/fiber-end detection
- LAN/WAN/FTTx application
- GR-196-CORE(.SOR) file format
- SOR and JPG file format
- Flexible file Naming

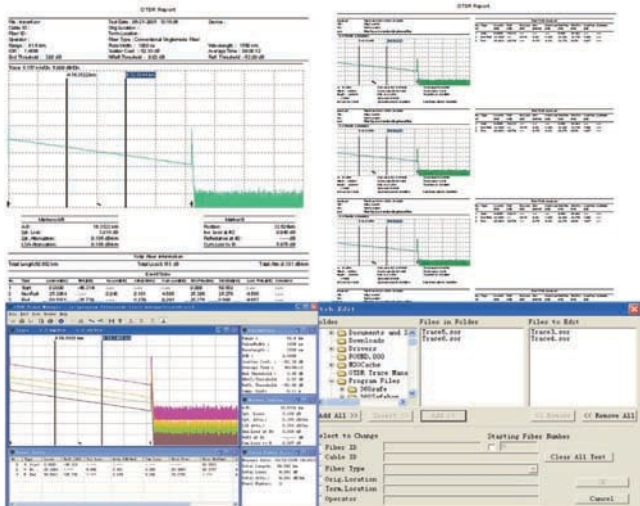
## Optimized Platform Performance

- Lightweight, 2.1kg
- 7 inch touch screen
- High strength protect horn
- Excellent Man-Machine interface for easy operation
- Damp-dust-shock proof
- Optimized power management: 10 hours continuous operation
- Fast power up and off with Windows CE
- Direct printing function (compatible with PCL printers)
- Remote/local control by PC



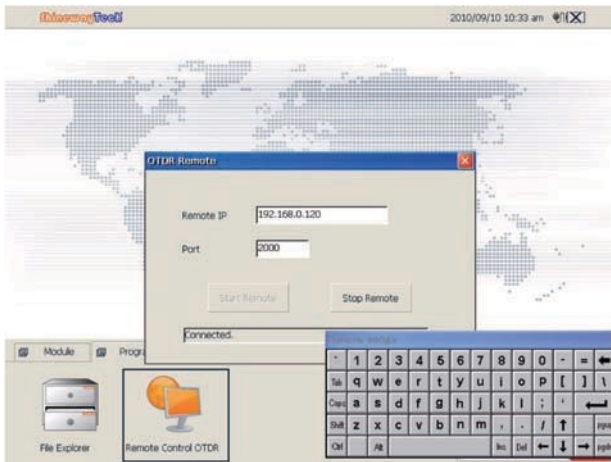
## MTP Suite PC Software

- Multi traces analysis
- Single/multi traces printing in one report
- Batch editing and printing
- Bidirectional traces analysis
- CSV report formats
- Remote control function



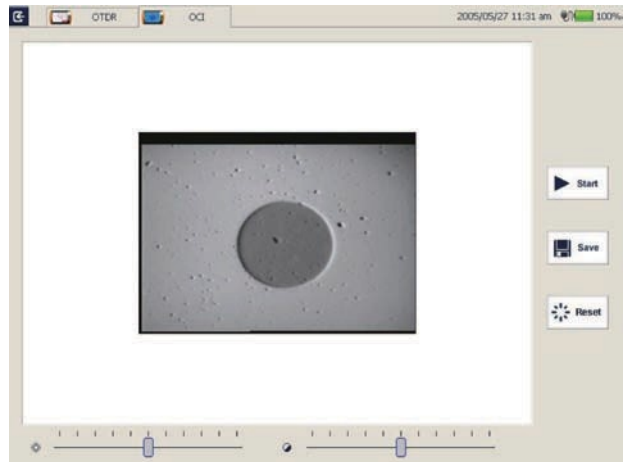
## NetworkRemote ControlModule(optional)

- Convenient networking
- Remote control instrument operation



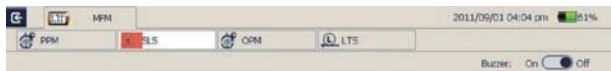
## OpticalConnectorInspector Module(optional)

- Focusingknob for fast focus
- Eye-safe and clear video viewing
- Interchangeable connector tips



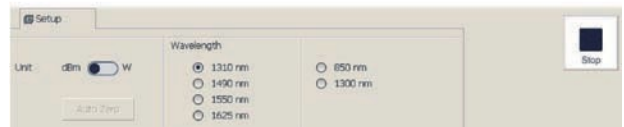
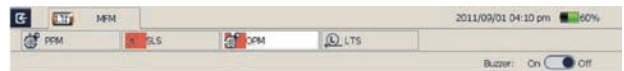
## StabilizedLaser SourceModule(optional)

- Wavelength same as the OTDR
- High precision and easy operation



## OpticalPower MeterModule(optional)

- Multi-wavelength Calibration
- High Precision
- Convenient Operation



## Applications

- Installation Stage
- Service Deployment
- Maintenance Stage

## Specifications

MTP-200Series	
Display	7 inchTFTTouch Screen (800×480)
Connectivity	USB×2; 10/100Mbit/s RJ-45×1
Memory	2GB
Power Supply	Rechargeable Li-Ion Battery/ACAdapter
Battery Life	10 hours continuous operation
Working Temp.	-20°C - 50°C
Storage Temp.	-40°C - 60°C
Humidity	0 - 95% (Non-Condensing)
Weight	2.1kg
Dimensions(L×W×H)	290×175×75mm

OTDRModule	Wavelength(±20nm)	DynamicRange(dB) <sup>(1)</sup>	EDZ(m) <sup>(2)</sup>	ADZ(m) <sup>(2)</sup>
MTP-200-20VA	1310/1550	32/30	0.8	4.5
MTP-200-20VB	1310/1550	34/32	0.8	4.5
MTP-200-20VC	1310/1550	38/37	0.8	4.5
MTP-200-20VD	1310/1550	45/43	0.8	4.5
MTP-200-20VF	1310/1550	50/48	0.8	4.5
MTP-200-31VC	1310/1550/1625	38/38/37	0.8	4.5
MTP-200-31VCP	1310/1550/1625	42/41/40	0.8	4.5
MTP-200-31VCL	1310/1550/1625	38/38/37	0.8	4.5
MTP-200-31VCPL	1310/1550/1625	42/41/40	0.8	4.5
MTP-200-33VC	1310/1550/1650	42/40/39	0.8	4.5
MTP-200-40VC	850/1300/1310/1550	23/36/38/36	1.5	8/8/10/10
Selectable Range	SM: 1.3, 2.5, 5, 10, 20, 40, 80, 160, 240Km MM: 1.3, 2.5, 5, 10, 20, 40Km			
PulseWidth	SM: 5ns, 10ns, 30ns, 100ns, 300ns, 1µs, 2.5µs, 10µs, 20µs MM: 5ns, 10ns, 30ns, 1µs, 2.5µs			
AveragingTime	Quick, 15s, 30s, 45s, 60s, 90s, 120s, 180s			
EmitterType	LD			
Connector	FC/PC (Interchangeable SC, STand LC )			
Distance Measure Accuracy	$\pm(1m + 10^{-5} \times \text{distance} + \text{sampling spacing})$			
Attenuation Detect Accuracy	±0.05 dB/dB			
Reflection Detect Accuracy	±4 dB			
Visible Laser Source	OutputPower: ≥-3dBm	MOD Frequency: 1Hz	Detecting Range: 5Km	

### MCI100OpticalConnectorInspectorModule(Optional)

Field of View	400µm×300µm
Resolution	≤1.5µm
Focusing	ManualFocus
Microscope Dimensions	Ø32×175mm

LS100StabilizedLaserSource(Optional)	
Wavelength ( $\pm 20\text{nm}$ )	Same as OTDR's
Output Power	$\geq -7\text{dBm}$

PM100NormalPowerMeterModule(Optional)	
Calibrated Wavelength	850nm, 1300nm, 1310nm, 1490nm, 1550nm, 1625nm, 1650nm
Measurement Range	-70dBm - +6dBm (-60dBm - +6dBm @ 850nm)
DetectorType	InGaAs
Display Resolution	0.01dB
Accuracy	$\pm 5\% \pm 0.01\text{nW}$ ( $\pm 0.5\text{dB}$ @850nm)

\*Specifications subject to change without notice

#### Notes

- (1) Dynamic range measurement at 20 $\mu\text{s}$  pulse width and 180s averaging time;
- (2) Dead Zone measurement at 0.6Km and reflection < -45dB; EDZ measurement at 5ns, ADZ measurement at 10ns.

### Order Information:

#### Standard Package

MTP-200 Host, Lithium Battery, CD (User Manual + PC Software), AC adaptor, Carrying Case, Warranty card, Calibration Certificate, Package Items List.

#### Optional Module:

LS100: Stabilized Laser

Source Module (as OTDR) PM100: Optical Power Meter Module

MCI100: Optical Connector Inspector Module RC100:

Remote control Module

LM100: Link Image Module

