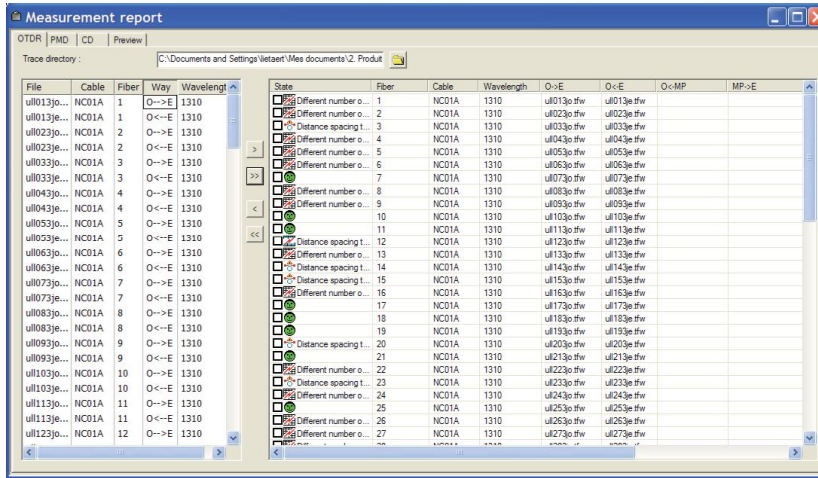
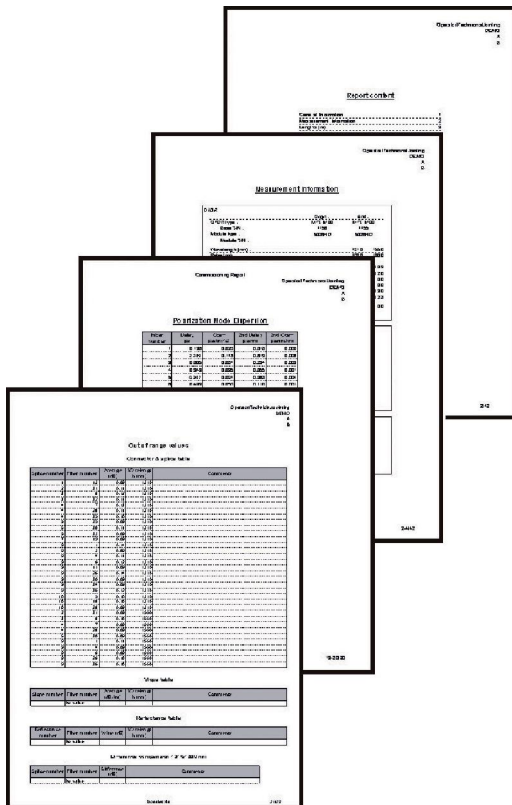
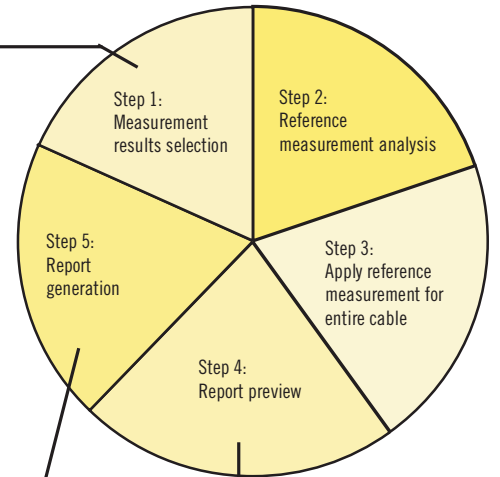


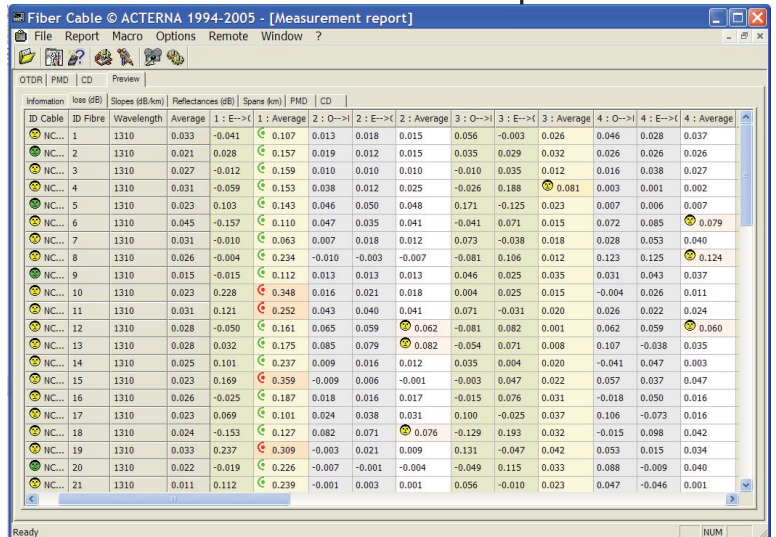
OFS-200 complete cable report generation solution: detailed, professional and error free!



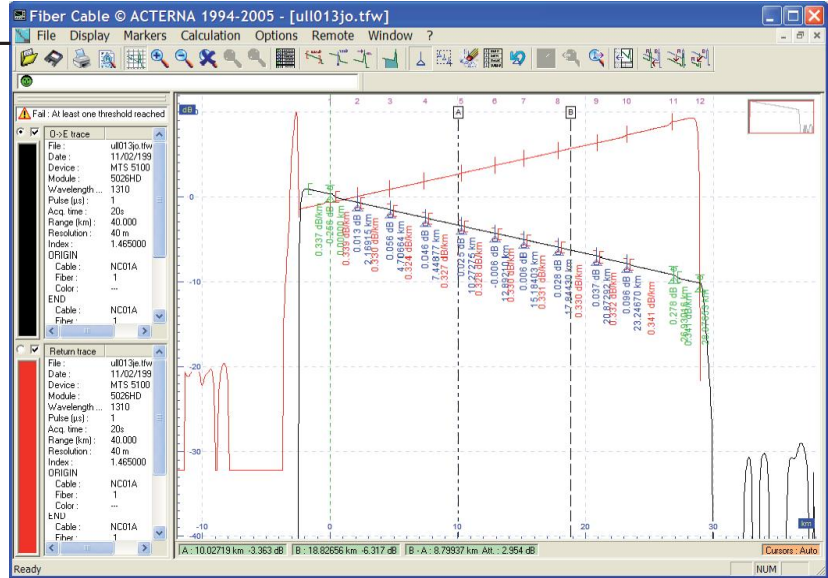
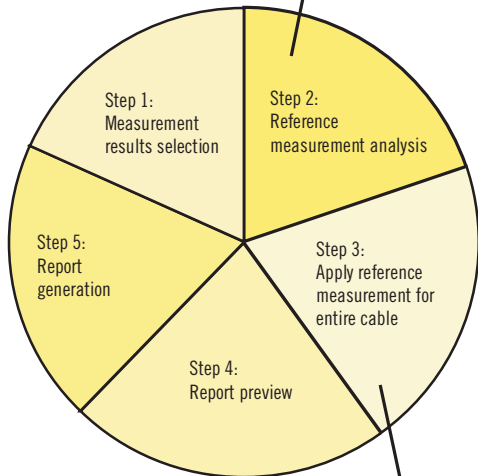
Step 1: Bi-directional OTDR analysis status



Step 5: Complete and professional measurement report document



Step 4: Incorrect, missing and out-of-range results pointed out



Step 2: Events positioning and out-of-range values information

The screenshot shows the 'Fiber Cable' software interface in 'Measurement report' mode. It displays a table with the following columns: File, Cable, Fiber, Way, Wavelength, State, Fiber, Cable, Wavelength, O->E, O<-E, O<-MP, and MP->E. The table lists 29 entries, each representing a different measurement configuration. The 'State' column contains green checkmarks, indicating that all measurements were successful.

File	Cable	Fiber	Way	Wavelength	State	Fiber	Cable	Wavelength	O->E	O<-E	O<-MP	MP->E
u11013jo...	NC01A	1	O->E	1310	✓	1	NC01A	1310	u11013jo.fthw	u11013jo.fthw		
u11013je...	NC01A	1	O<-E	1310	✓	2	NC01A	1310	u11023jo.fthw	u11023jo.fthw		
u11023jo...	NC01A	2	O->E	1310	✓	3	NC01A	1310	u11033jo.fthw	u11033jo.fthw		
u11023je...	NC01A	2	O<-E	1310	✓	4	NC01A	1310	u11043jo.fthw	u11043jo.fthw		
u11033jo...	NC01A	3	O->E	1310	✓	5	NC01A	1310	u11053jo.fthw	u11053jo.fthw		
u11033je...	NC01A	3	O<-E	1310	✓	6	NC01A	1310	u11063jo.fthw	u11063jo.fthw		
u11043jo...	NC01A	4	O->E	1310	✓	7	NC01A	1310	u11073jo.fthw	u11073jo.fthw		
u11043je...	NC01A	4	O<-E	1310	✓	8	NC01A	1310	u11083jo.fthw	u11083jo.fthw		
u11053jo...	NC01A	5	O->E	1310	✓	9	NC01A	1310	u11093jo.fthw	u11093jo.fthw		
u11053je...	NC01A	5	O<-E	1310	✓	10	NC01A	1310	u1113jo.fthw	u1113jo.fthw		
u11063jo...	NC01A	6	O->E	1310	✓	11	NC01A	1310	u11123jo.fthw	u11123jo.fthw		
u11063je...	NC01A	6	O<-E	1310	✓	12	NC01A	1310	u1113jo.fthw	u1113jo.fthw		
u11073jo...	NC01A	7	O->E	1310	✓	13	NC01A	1310	u1113jo.fthw	u1113jo.fthw		
u11073je...	NC01A	7	O<-E	1310	✓	14	NC01A	1310	u1143jo.fthw	u1143jo.fthw		
u11083jo...	NC01A	8	O->E	1310	✓	15	NC01A	1310	u1153jo.fthw	u1153jo.fthw		
u11083je...	NC01A	8	O<-E	1310	✓	16	NC01A	1310	u1153jo.fthw	u1153jo.fthw		
u11093jo...	NC01A	9	O->E	1310	✓	17	NC01A	1310	u1173jo.fthw	u1173jo.fthw		
u11093je...	NC01A	9	O<-E	1310	✓	18	NC01A	1310	u1183jo.fthw	u1183jo.fthw		
u11103jo...	NC01A	10	O->E	1310	✓	19	NC01A	1310	u1193jo.fthw	u1193jo.fthw		
u11103je...	NC01A	10	O<-E	1310	✓	20	NC01A	1310	u1203jo.fthw	u1203jo.fthw		
u1113jo...	NC01A	11	O->E	1310	✓	21	NC01A	1310	u1213jo.fthw	u1213jo.fthw		
u1113je...	NC01A	11	O<-E	1310	✓	22	NC01A	1310	u1223jo.fthw	u1223jo.fthw		
u1123jo...	NC01A	12	O->E	1310	✓	23	NC01A	1310	u1233jo.fthw	u1233jo.fthw		
u1123je...	NC01A	12	O<-E	1310	✓	24	NC01A	1310	u1243jo.fthw	u1243jo.fthw		
u1133jo...	NC01A	13	O->E	1310	✓	25	NC01A	1310	u1253jo.fthw	u1253jo.fthw		
					✓	26	NC01A	1310	u1263jo.fthw	u1263jo.fthw		
					✓	27	NC01A	1310	u1273jo.fthw	u1273jo.fthw		
					✓	28	NC01A	1310	u1283jo.fthw	u1283jo.fthw		
					✓	29	NC01A	1310	u1293jo.fthw	u1293jo.fthw		

Step 3: Bi-directional OTDR analysis status update

Features, applications and benefits

OFS-100 Optical FiberTrace

Remote control and file transfer via RS232 or Ethernet	Direct access to the MTS for fast file transfer
OTDR Bellcore/Telcordia Trace format compatible	Complies with GR-196-CORE issue 2 OTDR data standard revision 1.0/1.1/2.0
Automatic OTDR traces analysis	Provides splices, connectors, fiber attenuation, fiber end, ghosts and ORL measurement
Multiple-OTDR trace analysis	Limits manual operation with template generating of multiple-trace comparison
Advanced OTDR marker management	Addresses high level of information to each market/events
Detailed PMD and CD analysis	Sets calculation parameters, pre-define thresholds according to bit rate.
Powerful OSA post-processing functions	Sorts results for spectrum comparison, OSNR parameters adjustment etc. ...
Pass/fail function (user-definable alarm thresholds)	Carries out quick checks for immediate problem identification
Can export results into ASCII file format	Compatibility with spreadsheet softwares such as Microsoft Excel™

OFS-200 Optical FiberCable

Includes all the advantages of OFS-100 FiberTrace software	Maintains users ability to analyze any type of optical traces
Automatic bi-directional OTDR trace	Enables a quick association of the traces from both direction
Bi-directional status management (missing events, distance too large...)	Provides quick and flexible problem identification of each pair of traces
Individual or combined OTDR, PMD, IL and ORL report generation	Flexible solution to cover entire measurement results
Step by step report generation	Checks each individual traces while generating the report
Report Preview	Detailed preview of the complete report with alarm information
Out of range alarm on all measurements	Sorts out range values to directly access unacceptable measurements

Specifications

Compatibility with all files generated by the MTS-5000 and MTS-8000 platforms, OFI-2000 and ONT platform OSA data. FiberCable includes all FiberTrace functions.

Report macro : 48 MB or more of memory (128 MB recommended)

A 800 × 600 pixels monitor (1152 × 864 or above recommended)

PC requirements

An IBM Pentium 133MHz PC or 100% compatible computer (PentiumII 233 MHz or above recommended)

A hard drive and a CD-ROM drive

16 MB or more of memory (64 MB recommended)

A mouse pointing device

Microsoft Windows™ version 95, 98, 2000, NT, or XP

Microsoft Excel™

Memory requirements for Microsoft Excel™

Ordering information

OFS100	OFS-100
OFS200	OFS-200

All statements, technical information and recommendations related to the products herein are based upon information believed to be reliable or accurate. However, the accuracy or completeness thereof is not guaranteed, and no responsibility is assumed for any inaccuracies. The user assumes all risks and liability whatsoever in connection with the use of a product or its applications. JDSU reserves the right to change at any time without notice the design, specifications, function, fit or form of its products described herein, including withdrawal at any time of a product offered for sale herein. JDSU makes no representations that the products herein are free from any intellectual property claims of others. Please contact JDSU for more information. JDSU and the JDSU logo are trademarks of JDS Uniphase Corporation. Other trademarks are the property of their respective holders.
© 2005 JDS Uniphase Corporation. All rights reserved. 10143185 500 0707 OFS100-200.DS.FOP.TM.AE

Test & Measurement Regional Sales

NORTH AMERICA TEL: 1 866 228 3762 FAX: +1 301 353 9216	LATIN AMERICA TEL:+55 11 5503 3800 FAX:+55 11 5505 1598	ASIA PACIFIC TEL:+852 2892 0990 FAX:+852 2892 0770	EMEA TEL:+49 7121 86 2222 FAX:+49 7121 86 1222	WEBSITE: www.jdsu.com
---	--	---	---	--